



BXMC 32B

WALLENSTEIN

FORESTRY

BX
BXM

CHIPPERS & CHIPPER / SHREDDERS

- TRAILER
- 3-POINT HITCH
- SKIDSTEER
- CART



THE BENEFITS REALLY PILE UP.

When it's time to clean up, Wallenstein BX Wood Chippers and Wallenstein BXM Chipper / Shredders make quick work, turning waste into valuable chips and mulch.

RESOURCEFUL & TIDY



CHIPS AND MULCH

A BEAUTIFUL RESOURCE

Turn branches and leaves into a valuable resource that's perfect for pathways and flowerbeds with a Wallenstein BX Chipper or BXM Chipper / Shredder.

Chipping is your best method of reducing large, awkward branches to a fraction of their size, making handling easy and creating a useful ground cover that helps control weeds and retain moisture in hot weather. Leaf and twig cleanup is also simple with the BXM Chipper / Shredder, creating a fine mulch that adds that special finishing touch to your perfectly manicured flowerbeds.



PROMOTES...



NITROGEN RELEASE

Chips and mulch increase the rate of decomposition, adding nitrogen into the soil for improved plant growth



SOIL TEMPERATURE

During the day, ground-cover protects the soil from too much heat. At night, it insulates, reducing plant stress.



MOISTURE RETENTION

Groundcover reduces evaporation of valuable moisture by blocking direct sunlight to the surface of the soil.

PREVENTS...



DROUGHT

Wood chips create a barrier, conserving soil moisture and moderating soil temperature.



MOLD

Use of whole leaves form a soggy mat that impede new growth of plants and lawn grass and promote fungal growth.



WEED CONTROL

Use mulch or chips to suppress the growth of weeds.

PROTECT

ADVANCE

MODERATE

ENHANCE

BEAUTY AND CONVENIENCE

The final accent of precisely edged flowerbeds painted with your favourite blooms is the palate of wood chips and mulch that defines green lawn from flowerbed. Wallenstein Chippers and Chipper / Shredders give you the tool to make beautiful chips and mulch for your own gardens without the need to annually buy mulch and pay for delivery. With a Wallenstein, you can chip and shred right where you need it, saving, literally, wheelbarrow loads of work.

CLEAN UP & REMOVAL

For woodlot owners, arborists and municipalities, Wallenstein means disposing of brush piles easily, creating groundcover that's ideal for pathways, flowerbeds or improving the composting process.



WOOD CHIPS, MULCH AND YOUR GARDEN

NITROGEN



Together, leaves, bark and branches stagger the release of nitrogen back into the soil.

DECOMPOSITION



As the chips break down, heat is released, moderating soil temperature.

MOISTURE RETENTION

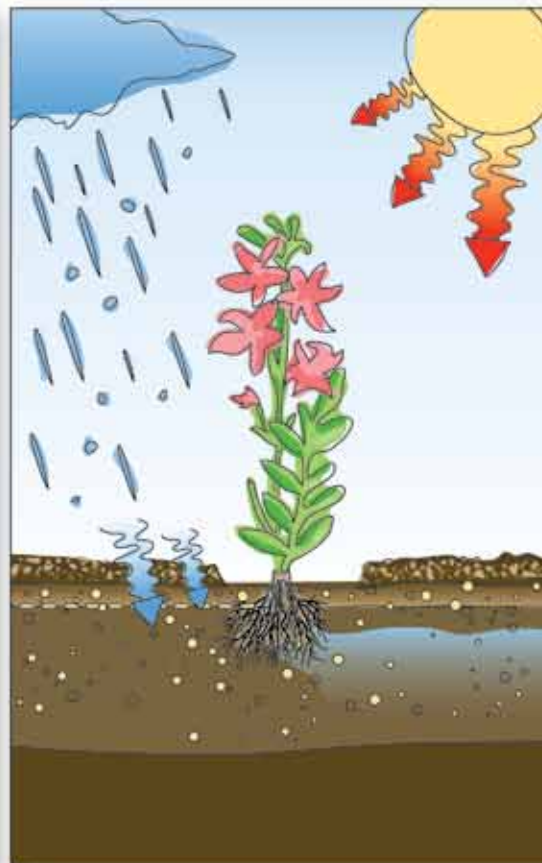
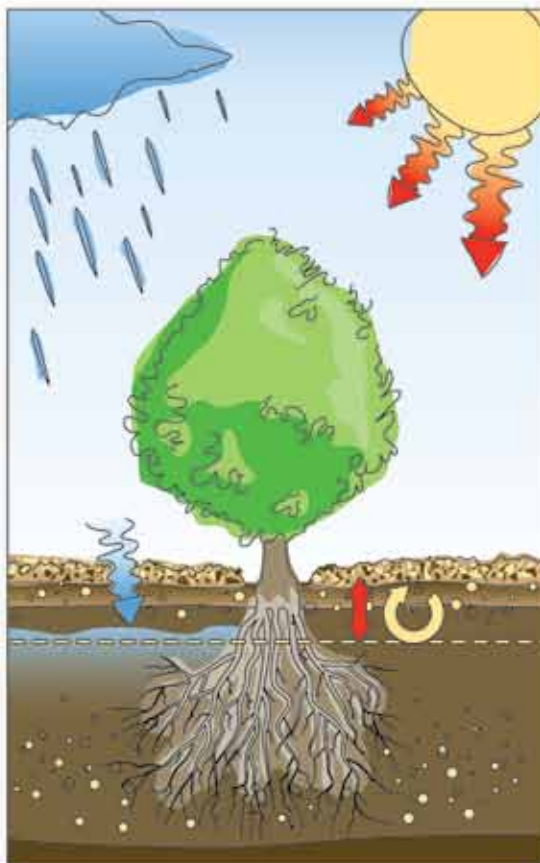


Chips absorb moisture and slow evaporation; keeping more water for plants.

HEAT DEFLECTION



Chips act as a diffuser and protective barrier against high heat.



WHY WALLENSTEIN?



Turn waste brush, branches and bark into valuable chips with the BX series of Wood Chippers. For finely mulched leaves and branches, as well, the BXM Chipper / Shredder series is right for you.

HEAVY DUTY CHIPPING POWER

At the heart of the Wallenstein BX Chipper is an oversize heavy duty rotor and reversible chipping blades. The large diameter rotor has a faster tip speed for improved chipping action. The heavy gauge steel keeps your momentum to power through tree trunks. The reversible blades are precision cut tool steel, hardened for long lasting sharpness.



360° EXIT CHUTE

Easily control where you want your chips or mulch with the double adjustable Exit Chute. The chute swivels 360 degrees and the top deflector adjusts the distance.

ENGINE PERFORMANCE

The BX Series of Wood Chippers and BXM Series of Chipper / Shredders are available in various engine sizes to suit your horsepower requirements. Powered by Honda, Subaru or Kohler, Wallenstein uses only the most reliable engines to power it's line of chippers and chipper / shredders.

POWERED by **HONDA**™

Powered by



KOHLER

SPEED | POWER | VERSATILITY | RELIABILITY



BXM 42

SELF FEEDING INTAKE HOPPERS

The over-sized chipping hopper is precisely angled to self-feed, reducing the need to limb branches before processing.

The top shredding hopper on the BXM models is tall and wide to easily put branches, leaves and bark in while keeping you safe.



NO MESS SHREDDING

Shredded material uses the same exit chute as the wood chips, making clean-up quick and easy with less handling.



CENTRIFUGAL CLUTCH

The centrifugal clutch on engine powered trailer units allows for easy starts and promotes longevity, low maintenance and ease of use. There's no complicated starting system or extra pulleys.

CHOP BLOCK

For shredding, the BXM revolutionizes the whole way you've come to expect finely mulched ground cover, with three

sets of cutting knives and the exclusive CHOP-Block.

The CHOP-Block works like an anvil, trapping material and forcing it to be shredded more precisely for consistent cut, clean-out and delivery through the exit chute.

Unlike conventional shredders, the BXM has no screens which greatly reduces clogging, even with wet material.



WELDED CONSTRUCTION

Welded construction improves durability and minimizes "bolt-on" parts, including the full frame base.



BX 32s

BXS CHIPPERS 3-POINT HITCH/PTO

Directly connected to your tractor's PTO, power is transferred straight into chipping / shredding. The self-feed hopper automatically pulls the branches in as it chips.



STANDARD FEATURES

360° Exit Chute	Self Feeding Chipper Hopper	Oversized Diameter Chipping Rotor	Hardened Tool Steel Reversible Chipping Blades	3-Point Hitch Mount iMatch™ quick hitch compatible	PTO Drivetrain, shearbolt protected
-----------------	-----------------------------	-----------------------------------	--	--	-------------------------------------

BX 32s

BX 42s

BX 62s

BX 92s



- 12-30 HP Range
- 25-30 HP Required for Max. Capacity
- 3" x 6" Chipper Housing Opening
- 17.5" Rotor with 2 Offset Knives at 45 lbs.
- Shipping Dimensions (WxLxH) 32" x 32" x 65"
- 58" Discharge Hood Height
- 320 lbs. Total Weight

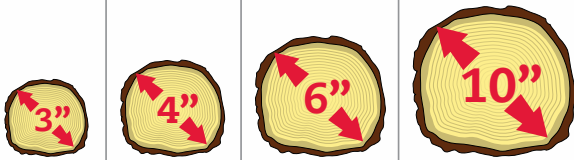
- 20-50 HP Range
- 35-40 HP Required for Max Capacity
- 4" x 10" Chipper Housing Opening
- 25" Rotor with 4 Knives at 75 lbs.
- Shipping Dimensions (WxLxH) 32" x 42" x 65"
- 60" Discharge Hood Height
- 425 lbs. Total Weight

- 35-100 HP Range
- 60-70 HP Required for Max. Capacity
- 6.5" x 12" Chipper Housing Opening
- 30" Rotor with 4 Knives at 197 lbs.
- Shipping Dimensions (WxLxH) 48" x 50" x 88"
- 74" Discharge Hood Height
- 770 lbs. Total Weight

- 65-150 HP Range
- 85-110 HP Required for Max Capacity
- 10" x 15" Chipper Housing Opening
- 36" Rotor with 4 Knives at 280 lbs.
- Shipping Dimensions (WxLxH) 54" x 50" x 95"
- 90" Discharge Hood Height
- 1000 lbs. Total Weight

CHOOSE THE RIGHT CHIPPER OR CHIPPER / SHREDDER FOR YOU.

LOG DIAMETER CHIPPING CAPACITY



MODEL

BX 32s

BX 42s

BX 62s

BX 92s

BX 42R

BX 62R

BX 92R



BX 32

BX 62R

BXR

HYDRAULIC ROLLER FEED

With a PTO powered rotor and hydraulic feed hopper, branches, limbs and brush are control fed for continuous chipping at maximum capacity.



STANDARD FEATURES

Hydraulic Feeding Hopper with infinitely variable speed adjustment



Spring Loaded - Auto Adjusting Feed Rollers



Safety Start/Stop Wrap-Around Roller Control Lever (Forward, Neutral, Reverse)



OPTIONAL

Hydraulic Power Pack for tractors without available hydraulics (On BX42r & BX62r models)

BX 42R



- 25-50 HP Range
- 35-40 HP Required for Max. Capacity
- 4" x 10" Chipper Housing Opening
- 25" Rotor with 4 Knives at 74 lbs.
- Shipping Dimensions (WxLxH) 32" x 46" x 65"
- 60" Discharge Hood Height
- 625 lbs. Total Weight

BX 62R



- 40-100 HP Range
- 60-70 HP Required for Max. Capacity
- 6.5" x 12" Chipper Housing Opening
- 30" Rotor with 4 Knives at 197 lbs.
- Shipping Dimensions (WxLxH) 48" x 60" x 88"
- 74" Discharge Hood Height
- 1070 lbs. Total Weight

BX 92R



- 65-150 HP Range
- 85 - 110 HP Required for Max. Capacity
- 10" x 15" Chipper Housing Opening
- 36" Rotor with 4 Knives at 280 lbs.
- Shipping Dimensions (WxLxH) 72" x 66" x 95"
- 90" Discharge Hood Height
- 1375 lbs. Total Weight



BXM 32

BXM

CHIPPER / SHREDDERS 3-POINT HITCH/PTO

Directly connected to your tractor's PTO, power is transferred straight into chipping / shredding action - quickly turning limbs, branches or debris up to 4" in diameter into valuable chips or mulch.



LOG DIAMETER CHIPPING CAPACITY



STANDARD FEATURES

Includes Chipping Features of BX Series

Exclusive Chop Block uses an anvil action to finely process material

Chipper & Shredder use the same 360° exit chute

MODEL

BXM 32
BXMC 32S
BXMC 32B

BXM 42

BXM 32



- 12-35 HP Range
- 25 - 30 HP Required for Max. Capacity
- 3" x 6" Chipper Housing Opening with 3" Capacity
- 10" x 10" Shredder Housing Opening with 1" Capacity
- 17.5" Chipper Rotor with 2 Offset Knives at 70 lbs.
- 27 Shredder Knives
- Shipping Dimensions (WxLxH) 36" x 44" x 65"
- 445 lbs. Total Weight

BXM 42



- 30-90 HP Range
- 35-40 HP Required for Max. Capacity
- 4" x 10" Chipper Housing Opening with 4" Capacity
- 10.5" x 10.5" Shredder Housing Opening with 2" Capacity
- 25" Chipper Rotor with 2 Knives at 170 lbs.
- 30 Shredder Knives
- Shipping Dimensions (WxLxH) 44" x 52" x 68"
- 800 lbs. Total Weight



BXMC

**CHIPPER / SHREDDERS
HAND CART**

BXMC 32s

Lightweight and portable, the BXMC is ideal for the small rural property. Powered by Subaru, it makes quick work of branches, brush and leaves.



STANDARD FEATURES

6.0 HP Subaru Engine

5 Second Stop Brake Clutch

Exclusive Chop Block uses an anvil action to finely process material

Non-deflating foam-filled rubber tires

BXMC 32s

- 6 HP Subaru SP170 Engine
- 3.5" x 5" Chipper Housing Opening with 3" Cap.
- 6" x 7" Shredder Housing Opening with 3/4" Cap.
- 14" Chipper Rotor with 2 Offset Knives at 28 lbs.
- 8 Shredding Knives
- Screen Discharge with 1.5" Screen Included, Options Available
- Shipping Dimensions (WxLxH) 37" x 43" x 47"
- 250 lbs. Total Weight
- 4.10 x 3.5 Tire Size, Foam Filled



Standard Screen:

1.5" Round Screen (part# 1074L250)

Optional Screens:

0.75" Round Screen (part# 1074L240)

1.5" Wet Screen (part# 1074L260)



BXMC 32B

- 6 HP Subaru SP170 Engine
- 3.5" x 5" Chipper Housing Opening with 3" Cap.
- 6" x 7" Shredder Housing Opening with 3/4" Cap.
- 16" Chipper Rotor with 2 Offset Knives at 40 lbs.
- 12 Shredding Knives
- Blower Discharge with Bag Included (2.7 cu ft)
- Shipping Dimensions (WxLxH) 40" x 43" x 49"
- 270 lbs. Total Weight
- 4.10 x 3.5 Tire Size, Foam Filled



Optional Trailer Hitch
Part# 1082A355





BXT 4224

BXT**CHIPPERS TRAILER**

Pick up and go wherever you need it. Ideal for keeping jobsites clean and tidy, Contractors, Arborists and Municipalities can easily chip or mulch branches into vehicles and haul them away with the trailer style BXT Chippers or BXMT Chipper / Shredders.

**STANDARD FEATURES**

360° Exit Chute



Belt Drive



Centrifugal Clutch for easy 1 step start-up

Electric Start
(Except on BXMT3209)

Self Feeding Chipper Hopper



Hardened Tool Steel Reversible Chipping Blades

BXT 4213/4214su

- 13 HP Honda **GX 390** Engine
- 14 HP Subaru Electric Start Engine
- 4" x 10" Chipper Housing Opening
- 25" Rotor with 2 Knives at 74 lbs.
- Shipping Dimensions (WxLxH) 59" x 70" x 72"
- 72" Discharge Hood Height
- 785 lbs. Total Weight
- 4.80 x 8 Tire Size
- Built-in Tool Box

BXT 4224/4228su

- 24 HP Honda **GX 670** Engine
- 28 HP Subaru EFI Engine
- 4" x 10" Chipper Housing Opening
- 25" Rotor with 2 Knives at 74 lbs.
- Shipping Dimensions (WxLxH) 59" x 70" x 72"
- 72" Discharge Hood Height
- 825 lbs. Total Weight
- 4.80 x 8 Tire Size
- Built-in Tool Box

BXT 6224/6228su

- 24 HP Honda **GX 670** Engine
- 28 HP Subaru EFI Engine
- 6.5" x 12" Chipper Housing Opening
- 30" Rotor with 2 Knives at 197 lbs.
- Shipping Dimensions (WxLxH) 74" x 88" x 88"
- 88" Discharge Hood Height
- 1365 lbs. Total Weight
- 20.50 x 8-10 Tire Size
- Built-in Tool Box

BXT 6238

- 38 HP Kohler **CH 980** Engine
- 6.5" x 12" Chipper Housing Opening
- 30" Rotor with 2 Knives at 197 lbs.
- Shipping Dimensions (WxLxH) 74" x 88" x 88"
- 88" Discharge Hood Height
- 1385 lbs. Total Weight
- 20.50 x 8-10 Tire Size
- Built-in Tool Box

BY WOOD CHIPPERS & BYM CHIPPER / SHREDDERS

CHOOSE THE RIGHT CHIPPER OR CHIPPER / SHREDDER FOR YOU.

LOG DIAMETER CHIPPING CAPACITY



MODEL

BXMT 3209
BXMT 3213

BXT 4213
BXT 4224
BXMT 4224

BXT 6224
BXT 6238



BXMT 3209

BXMT

CHIPPER / SHREDDERS



SHREDDER EXCLUSIVE FEATURES

Highway Travel for the BXT with Signal Lights

Torflex® Suspension Axles for Smooth Trailing

Oversized Diameter Chipping Rotor

Exclusive Chop Block uses an anvil action to finely process material

Chipper & Shredder use the same 360° exit chute

BXMT 3209



- 9 HP Honda **GX 270** Engine
- 3" x 6" Chipper Housing Opening with 3" Cap.
- 10" x 10" Shredder Housing Opening with 1" Cap.
- 17.5" Chipper Rotor with 2 Offset Knives at 70 lbs.
- 27 Shredder Knives
- Shipping Dimensions (WxLxH) 44" x 58" x 56"
- 400 lbs. Total Weight
- 4.10 x 6 Tire Size

BXMT 3213/3214su



- 13 HP Honda **GX 390** Engine
- 14 HP Subaru Engine
- 3" x 6" Chipper Housing Opening with 3" Cap.
- 10" x 10" Shredder Housing Opening with 1" Cap.
- 17.5" Chipper Rotor with 2 Offset Knives at 70 lbs.
- 27 Shredder Knives
- Shipping Dimensions (WxLxH) 44" x 60" x 58"
- 520 lbs. Total Weight
- 4.80 x 8 Tire Size

BXMT 4224/4228su/4238



- 24 HP Honda **GX 670** Engine
- 28 HP Subaru EFI Engine
- 38 HP Kohler Engine
- 4" x 10" Chipper Housing Opening with 4" Cap.
- 10.5" x 10.5" Shredder Housing Opening with 2" Cap.
- 25" Chipper Rotor with 2 Knives at 170 lbs.
- 30 Shredder Knives
- Shipping Dimensions (WxLxH) 64" x 84" x 80"
- 1080 lbs. Total Weight
- 6.50 x 8 Tire Size
- Built-in Tool Box



BXH 42

BXH CHIPPER SKIDSTEER

Get the most out of your equipment with the practical BXH 42 Skidsteer Mounted Wood Chipper. The hydraulically driven BXH 42 is powered directly from the skidsteer's external ports, providing plenty of chipping action.



STANDARD FEATURES

- 360° Exit Chute for accurate chip placement
- Chipper Driven by Skidsteer Hydraulics
- Self Feeding Chipper Hopper
- Hardened Tool Steel Reversible Chipping Blades
- Chipping Rotor Rated 1000 RPM @25gpm

BXH 42

SKIDSTEER - The skidsteer mount makes the BXH 42 easy to attach so you can switch from a bucket to chipper quickly and easily.

- Hydraulically powered
- 4" x 10" Chipper Housing Opening
- 25" Rotor with 2 Knives at 74 lbs.
- 65" Discharge Hood Height
- 740 lbs. Total Weight
- Shipping Dimensions (WxLxH) 48" x 60" x 65"
- 25gpm recommended flow
- 20-30gpm flow range



The BXH 42 is capable of chipping 4-inch diameter logs with its heavy-duty rotor and 2 hardened tool steel reversible cutting blades.

AUTHORIZED DEALER:

WALLENSTEIN

Manufactured by EMB MFG Inc.
 1-877-695-9283 Tel: (519) 699-9283 Fax: (519) 699-4146
 4144 Boomer Line, St. Clements, ON N0B 2M0 Email: sales@embmfg.com
www.embmfg.com

PART # Z96326 REV 01
 EEC14579-S01-01
 PRINTED IN CANADA